

Lower Window



Lower Window Object
stainless steel, wax
19 x 137 x 3.5 cm

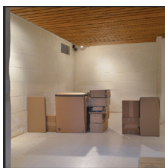
Kitchen



Dialogue Pressing Object
chromed steel, upholstery, timber, limestone, pressed plasticine, acrylic
(4 pressing events of variable duration with two people)
installation variable



Kitchen Corner Object
digital prints on rag paper, mounted on aluminium
5 parts;
installation variable



Kitchen Mediation Photowork
digital print on rag paper, mounted on aluminium
80 x 80 cm

Laundry



Laundry Object
cleaned Mount Gambier limestone blocks, latex
installed size
77 x 200 x 30 cm



Laundry Models
hardwood
various sizes



Laundry Mediation Photowork
digital print on rag paper, mounted on aluminium
80 x 80 cm

Carolyn Eskdale: Memory Horizon

15 February to 14 June 2020

Carolyn Eskdale's installations trace the way we physically and psychically inhabit the world, creating a dialogue between the body's senses and the mind's view. In *Memory Horizon* she presents new work that responds to the modernist architecture of the former residence, Heide Modern, and re-presents the house as its own cast object.

After 'inhabiting' the building in solitude for several months making ephemeral structures from cardboard in each of the rooms, Eskdale has developed a sculptural language of motifs and forms specific to its character and history. The exhibition presents photographs of her temporary in-situ works in conversation with new sculptures and insertions that activate or obscure access to the spaces, altering visitors' experiences of them. In layering past procedures and present conditions, Eskdale explores the interstices between private and public life and the overlap between the studio and the gallery.

The title of the exhibition, *Memory Horizon*, plays on the phrase 'event horizon'—a term that refers to the boundary that straddles diverse pasts and possible futures.

Supported by

THE LIONEL & YVONNE
SPENCER TRUST



All photoworks are works are courtesy of the artist.
Installation photographs: Christian Capurro.

HEIDE
MUSEUM
OF MODERN
ART

Entrance



Entrance Object
steel, cast bronze
4 parts, each 105 x 40 x
40 cm (diam.),
overall length 5.4 m



*Entrance Mediation
Photowork*
digital print on rag
paper, mounted on
aluminium
80 x 80 cm



*Corridor Mediation
Photowork*
digital print on rag
paper, mounted on
aluminium
80 x 80 cm

Bedroom



Bedroom Screen Object
aluminium frame,
timber, blind fabric
installation variable



Wardrobe Installation
cardboard
installation variable



*Bedroom Mediation
Photowork*
digital print on rag
paper, mounted on
aluminium
80 x 80 cm

Ensuite



Ensuite Object
stainless steel tray
installation variable



*Ensuite Mediation
Photowork*
digital print on rag
paper, mounted on
aluminium
80 x 80 cm

Study



Study Object
cast aluminium plates,
timber stud
5 elements, installed
installation variable



*Study Mediation
Photowork*
digital print on rag
paper, mounted on
aluminium
80 x 80 cm

Corridor



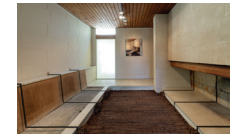
Corridor Object
pigmented acrylic on
linen, acrylic screen
200 x 95 cm

Powder Room



Powder Room Object
steel, cast bronze
27 x 35 x 97cm

Conversation Pit



Conversation Pit Object
removed furnishings,
steel rods, timber
wedges
installation variable



*Conversation Pit
Mediation Photowork*
digital print on rag
paper, mounted on
aluminium
80 x 80 cm

Balcony



Balcony Screen Object
aluminium frame, wax,
timber, blind fabric
installation variable



*Undercroft Mediation
Photowork*
digital print on rag
paper, mounted on
aluminium
80 x 80 cm

Lounge Room



Lounge Object
timber, polyurethane,
cast aluminium, ash
240 x 410 x 210 cm



*Lounge Mediation
Photowork*
digital print on rag
paper, mounted on
aluminium
80 x 80 cm